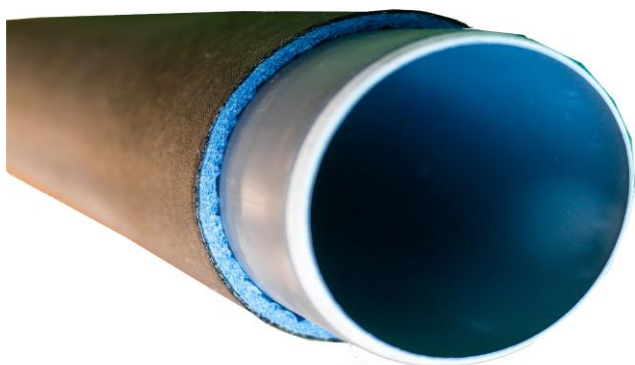


# COVERSOUND BIT



## DESCRIPTION

Acoustic shell specifically designed for the coating of drain pipes inserted in walls or cavities, composed of a chemical cross-linked polyethylene with a density of 30 Kg / m<sup>3</sup> of thickness 8 mm with a special channel shape, coupled to an elastomeric covering with a weight 2 Kg / m<sup>2</sup>.

The polyethylene, with its channel shape, keeps the bituminous mantle detached from the pipe, thus obtaining an added value of acoustic insulation.

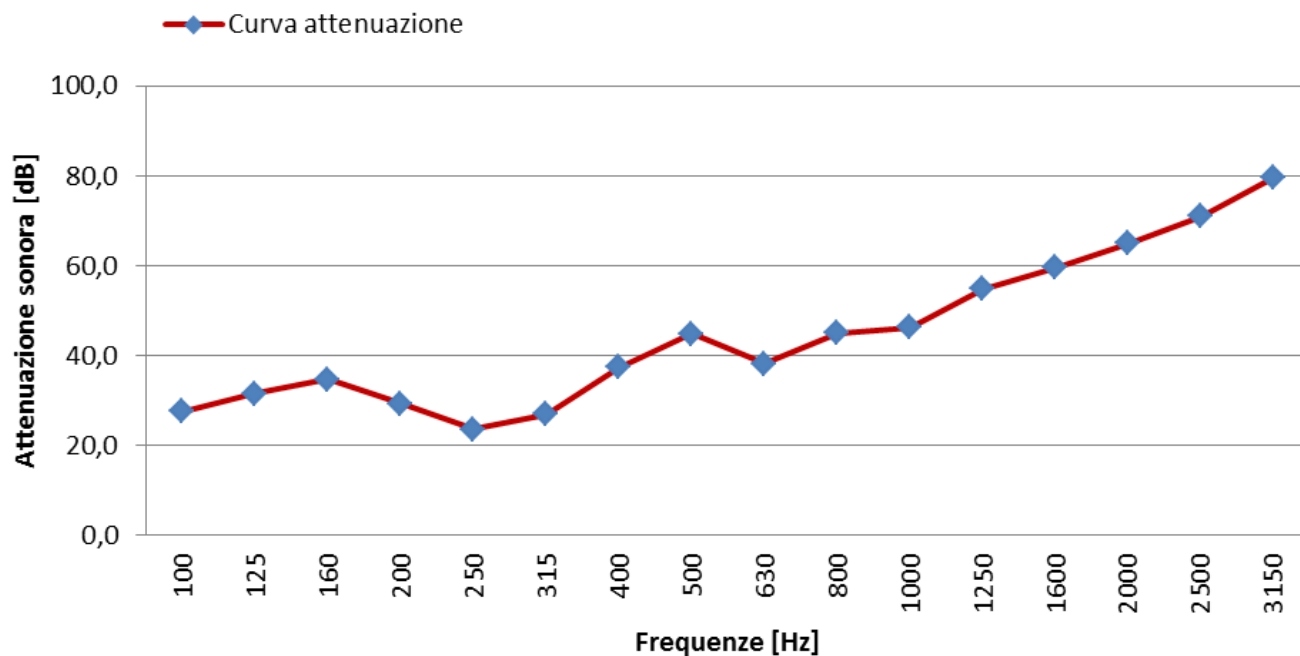
This cup is supplied with a height of 1.20 meters and already cut to the required size according to the diameter of the pipe to be insulated (Diameter 75, 90, 110, 125, 160 mm) considerably reducing the application time and waste.

Furthermore, the product is equipped with an adhesive tape that makes it faster to close.

### SIZE

Tube diameter	mm	φ 75 mm	φ 90 mm	φ 110 mm	φ 125 mm	φ 160 mm
Format	Pezzo	0,29 x 1,2 m	0,33 x 1,2 m	0,40 x 1,2 m	0,44x 1,2 m	0,55 x 1,2 m
Pakaging	Pezzi	12	12	12	12	12
Thickness	mm	8 mm	8 mm	8 mm	8 mm	8 mm

## PERFORMANCE FEATURES PRESTAZIONALI



**ATTENUAZIONE ACUSTICA = 21 dB**

## EXAMPLE OF LAYING



**POLYMAXITALIA**  
Specialisti dell' Isolamento Acustico

**POLYMAXITALIA Srl**  
Via Mestre, 4 Z.I. – 31033 Castelfranco Veneto (TV)  
Tel +39 0423 493544 Fax +39 0423 497841  
info@polymaxitalia.it – www.polymaxitalia.it

Bind the pipe with the Coversound Bit cup and secure it with the special adhesive already prepared.

It is also very important to wrap the curves and branches with the Rotocell AD tape.

## ACCESSORIES FOR CORRECT INSTALLATION



### **ROTOCELL AD**

for sealing the joints of the various acoustic products, in such a way as to obtain product continuity

---

**ATTENTION:** This document is not a specification. It will be the user's responsibility to establish whether the product is suitable for the intended use.

Rev. 0 - 21/05/2019

**Emanuele Bonifazi**

Responsabile Direzione Tecnica